

INDUSTRY 4.0 SOLUTIONS

Your End to End
Technology Partner



Holistic transformation -
defined by change,
driven by intelligence
and powered by digitization,
analytics & insights

OUR CAPABILITIES HELP YOU 'DIGITIZE' RIGHT



INDUSTRIAL IOT

Connected Factory | Facility Management |
Production Flow Management | Inventory Management |
Plant Safety and Control | Quality Control |
Smart Process Optimization | Manufacturing Intelligence

DIGITIZATION

Digital Transformation | Structured Phase Approach
Customized Implementation & Delivery Model
Regular Benefit Evaluation



DIGITAL ENTERPRISE SOLUTIONS

AI/ML | Data Analytics | Intelligent Automation |
Industrial Simulation | Enterprise System Integration |
Enterprise PLM | Application Development |
Cloud Solutions

SMART PROCESS AUTOMATION

Robotic Automation | Workforce Orchestration
Cognitive Automation





INDUSTRIAL & SHOP FLOOR AUTOMATION

Industrial Robots | Industrial Controls |
Sensors & Actuators | Material Handling |
Production Reporting | Inventory & Logistics |
Hardware & Software - Design & Development

AUGMENTED, VIRTUAL & MIXED REALITY

Digital Twin | Application Development
Software Customization | Digitization for AR |
Deployment, Training & Maintenance |
Workflow Optimization



DIGITIZATION ACROSS INDUSTRIES



AEROSPACE



DEFENCE



HEAVY
ENGINEERING



AUTOMOTIVE &
INDUSTRIAL
PRODUCTS



ENERGY

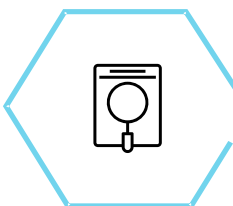


MEDICAL DEVICES

- **Improve efficiency**
- **Enhance customer value**
- **Manage risk**
- **Innovate and discover new opportunities**
- **Enable insights across enterprise**

Leverage AXISCADES' decades of core engineering expertise combined with strong digital knowledge in AI, ML, Cloud based solutions and Big data analytics to make smart decisions.

Let us create a blue print for your digital success



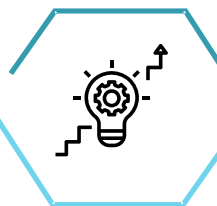
Requirement
Analysis



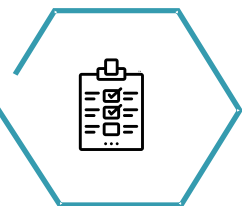
Strategy
Mapping



Custom
Delivery Model



Implementation



Evaluation
for Continual
Improvement



AXISCADES is a leading, end to end technology solutions and product company. We bring expertise that caters to the digital, engineering and smart manufacturing needs of large enterprises. With decades of experience in creating innovative, sustainable and safer products worldwide, AXISCADES delivers business value across the entire engineering lifecycle.

Our deep domain expertise and engineering solution portfolio covers the complete product development lifecycle from concept evaluation to manufacturing support and certification for the Aerospace, Defense, Heavy Engineering, Automotive & Industrial Products, Energy and Medical Devices.

AXISCADES is headquartered in Bangalore and has offices across India, North America, Europe and the Asia Pacific region.

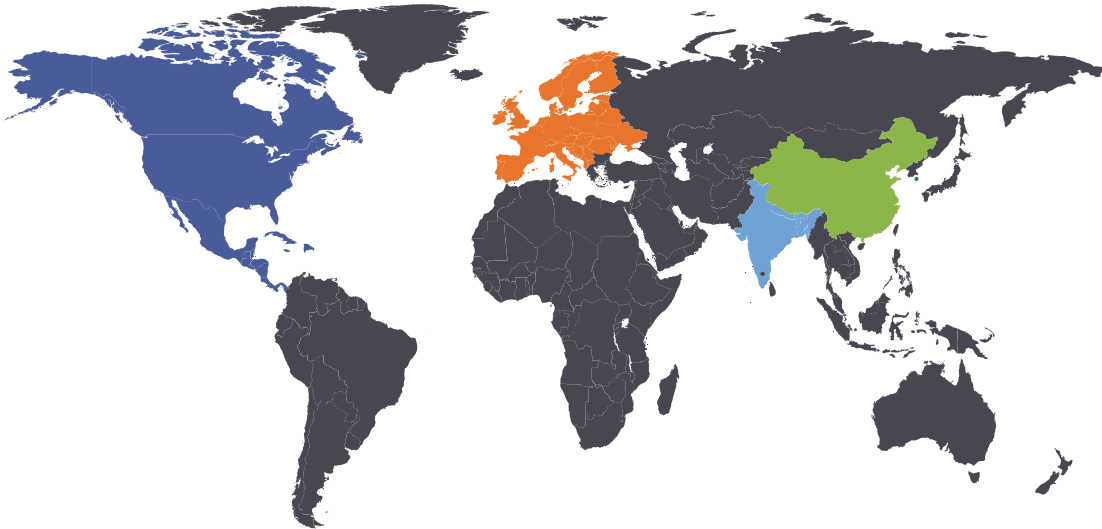
Global Footprint, a step closer to customers

Multinational teams
Engineers delivering customer delight

3500+

17

Global Engineering Centers
State of art Global Engineering Centers to reduce the program risk & time to market



North America

- Peoria, Illinois - USA
- Columbus, Indiana - USA
- Tucson, Arizona - USA
- Greenville, SC - USA
- SFO, California - USA
- Montreal - Canada

Europe and UK

- Leicestershire, Saltney - UK
- Toulouse, Saint Nazaire - France
- Hamburg, Donauworth, Augsburg - Germany
- Copenhagen - Denmark

India

- Bengaluru (3)
- Chennai
- Hyderabad

China

- Wuxi City