



DRIVING **INNOVATION**,
ENGINEERING **EXCELLENCE**



Our mission is rooted in the pursuit of transforming traditional manufacturing paradigms through seamless integration of cutting-edge Digital Technologies. With a robust portfolio of services and offerings, we empower businesses to unlock their full potential, optimize operational efficiency, and achieve sustainable growth in an ever-evolving market.

Today, as we navigate the intricacies of the modern industrial landscape, our deep-rooted expertise in core engineering has enabled our pivot towards Digital, Embedded, and Smart Manufacturing solutions.



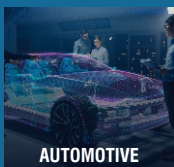
AEROSPACE

Structures & Cabin Engineering
Plant Engineering
Electrical Wiring & System Installation



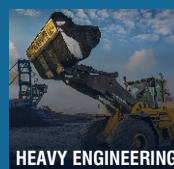
DEFENCE & HOMELAND SECURITY

Electronic Warfare Systems | Avionics | System Integration | Simulators | Test Solutions | Drones & Anti-Drone Systems | Airborne & Telemetry Solutions
Mobile C4ISR platforms



AUTOMOTIVE

ADAS | Passive Safety Systems
Automotive Electronics | AUTOSAR | ASPICE | HMI | Infotainment & Telematics | Vehicle Engineering



HEAVY ENGINEERING

Digital Manufacturing | Fleet Management | Telematics | Vehicle Engineering | Industrial Product Life Cycle



WIND ENERGY

Wind Analysis & Siting | Engineering PLM | Mechanical & Electrical Engineering | Automation | Maintenance Support



OIL & GAS

Upstream | Midstream | Downstream | Flow Assurance | Asset Integrity and Management | Engineering Simulation



Digital Engineering

Digitization & Automation
Robotic Process Automation
AI / ML / CV / Regenerative AI | AR / VR / MR
Data Analytics & Visualization | Cloud Services
App Development - Web/Mobile/Desktop



Industry 4.0

Industrial IoT | IIoT Sensors |
Cobots | Digital Twin
Data Lake House Solutions |
Anomaly Detections

Embedded Solutions

Hardware Design
Software Development
FPGA Design Services
Middleware & Application Development
Electrical CAD Services
Testing & Validation



Smart Manufacturing

Shop Floor Automation
Smart Process Automation
3D Digital Factory Development & Validation
Virtual Manufacturing
Supply Chain Management

Test Solutions

Automatic Test Equipment
Test Interface Unit
System & Sub-system Integration
Acceptance testing
Installation
Commissioning



Manufacturing Engineering

Tool Design
NC Programming
Plant Layouts
Process Planning
Production

Product Engineering Services

Product Design & Development
Engineering Analysis and Simulation
Value Engineering
Manufacturing Support
After Sales Product Support Services



After Sales Solutions

Technical Publication
Structural Repair & Modifications
Upgradation & Life Extension
Platform Migration
Reverse Engineering
Engineering Change Management – ECO/ ECR
Durability and Warranty Study

About AXISCADES

AXISCADES stands at the forefront as a premier provider of end-to-end technology and engineering solutions, dedicated to fostering the creation of innovative, sustainable, and safer products on a global scale. Headquartered in Bengaluru, with offices spanning across India, USA, France, Germany, UK, Denmark, Canada, and China.

AXISCADES boasts a diverse team of over 3500+ professionals. These experts collaboratively work out of 17 offices in these locations, all committed to minimizing program risks and accelerating time to market.

We have pivoted to build comprehensive capabilities enabling the transformation of urban mobility in terms of CASE ("Connected", "Autonomous", "Shared", and "Electric"), SDV (Software Defined Vehicles) & ADAS (Advanced Driver Assistance Systems).

Our commitment extends to delivering cutting-edge digital services encompassing IoT-enabled solutions, advanced embedded systems, and digital transformation strategies, empowering businesses to navigate and thrive in the digital era with unparalleled efficiency and innovation.

With a team of seasoned professionals and a relentless passion for excellence, we stand poised to lead the charge towards a future defined by digital resilience, operational agility, and sustainable growth.

OUR SUBSIDIARY BRANDS



GLOBAL FOOTPRINT, A STEP CLOSER TO CUSTOMERS

3500+

Multinational teams
Engineers delivering customer delight

17

Global Engineering Centers
State of the art Global Engineering Centers to reduce the program risk & time to market

NORTH AMERICA

Peoria, Illinois - USA
Columbus, Indiana - USA
Tucson, Arizona - USA
Greenville, SC - USA
SFO, California - USA
Montreal - Canada

EUROPE & UK

Leicestershire, Saltney - UK
Toulouse, Saint Nazaire - France
Hamburg, Donauwörth, Augsburg - Germany
Copenhagen - Denmark

INDIA

Bengaluru (3)
Chennai
Hyderabad

CHINA

Wuxi City

AXISCADES Technologies Limited
Kirkoskar Business Park, Block 'C', 2nd Floor, Hebbal, Bengaluru – 560024 Karnataka, INDIA.
Tel: +91 80 4193 9000 Fax: +91 80 4193 9099