

Track Social Distancing at your facility or shop floor through

AXISCADES' AI Solution



WHY

With governments easing lockdown measures and businesses resuming activities, it is imperative for employees and workers to follow effective social distancing norms to reduce the possible spread of COVID – 19. Although offices and manufacturing facilities try to adhere to all the prescribed precautionary measures, constant monitoring and operation fatigue might lead to 'slip ups' that might have an adverse effect. A solution was needed to constantly monitor social distancing within the premises that can automatically detect violations and report to the concerned.

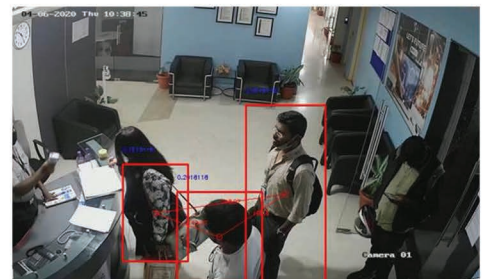
WHAT

Constant monitoring of social distancing is challenge for any operations team as it means manual round the clock monitoring of the CCTV footage and additional resources used for enforcement. With education of the disease, workers and employees are well aware of the risk but force of habit makes them flout social distancing norm. A team of experts looked at the problem and built an AI solution that detects violations through CCTV footage (or live video) that is readily available for organizations to deploy at their facilities.

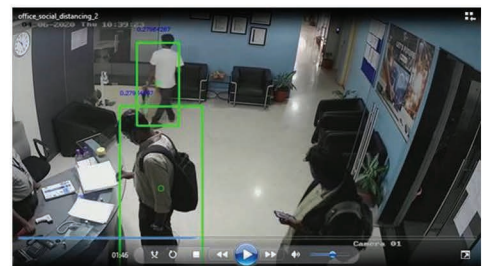
HOW

At the core of the solution is an algorithm that uses a python script that can monitor social distancing using a Person Detection Deep Neural Network and a Clustering algorithm to check if people are in close proximity to each other by running a stock video/ footage for comparison.

The solution measures distance, labels the distance for proof and highlights the violators through red boxes around the individual. The distances that need to be followed can be customized based on the law of the land and an alert mechanism can be set up to triggered every time someone fails to maintain the prescribed distance.



Does not follow social distancing



Follows social distancing

Write to info@axiscades.com for a free demo

AXISCADES will be sharing a free version of the solution to its existing customers and a select few as part of their CSR initiative.